



**Commodities
International
Survey Services**





**Company CISS
(Commodities International
Survey Services) -
This is a team of professionals
with experience of doing
business in major international
survey companies more than 10
years.**

ABOUT COMPANY

We have teamed up our forces, experience and knowledge in order to offer only the best practice and business solutions in the field of independent inspections for active commodities traders and others players all over the world.

Operational excellence and high standards of CISS GROUP allow our partners feel protected twenty-four-hour a day.



It's Shipping & Survey

OFFICES AND REPRESENTATIONS

Head office of CISS Group Pte. Ltd. is located in Singapore.

CISS Group is group of companies involved in maritime business.

There are three main business directions of the companies:

- Survey (testing, inspection and certification) of different cargoes and commodities.
- Ship brokerage and vessel chartering, ship operation and management.
- Marine power plants maintenance, overhauling and repair by mobile technical team.

We provide service globally - all around the world by own or subcontracted inspectors in more than 60 countries and more than 150 ports.



CISS
Commodities
International
Survey Services



SURVEY

CISS GROUP provides the most innovative high quality, cost effective survey services for all types of commodities, general cargo and consumer goods in all major ports.

In some countries we have affiliated branches and in other countries we have a franchise partners, which act under one umbrella brand "CISS".

Our service is focused to support our clients to mitigate and minimize the risks which they might be faced with during export/import operations.

All global companies are involved in trade environment. Our aim is to respond to a constantly changing world and guarantee our customers the greatest possible competitiveness and security in survey services at the highest standards of quality on the basis of a flexible and efficient structure and rapid decision making.

We also involved in trade finance scheme to provide our customers with trade assessment and deliver them added value in the supply chain management.

We are accredited by ISO, GAFTA, FOSFA and some international finance institutions and banks.

In accordance to Basel Committee on Banking Supervision (BCBS) and Basel III rules the banks should maintain and update independent inventory, as well as control of stored pledged cargo.

CISS GROUP assists to the borrowers and the lenders in setting up cost effective and assess to the mitigating controls.

We are partner of GlobaSign. Our e-certificates (SSL Certificates) offer the strongest encryption and information is kept secure. These are value-add features to our customer and insurance that our electronic issued documents are well protected and they meet the demands of today's modern requirements in documentary letter of credits.

Issued by CISS GROUP digital certificates and inspection documents are fully compliant with UCP600* requirements approved by the Banking Commission of the International Chamber of Commerce.



CISS
Commodities
International
Survey Services

*) The Uniform Customs and Practice for Documentary Credits is a set of rules on the issuance and use of letters of credit.

BASIC SERVICES



- incoming / outgoing cargo control
- inspection of holds cleanliness / containers / vehicle / wagons
- inspection of vehicle suitability for specified cargo carriage
- loading supervision twenty-four-hour a day



- visual inspection of cargo quality during loading/discharging operations
- cargo sampling during loading/unloading and a composite sample preparation as representative for whole cargo amount
- laboratory testing and analyses for all types of cargo



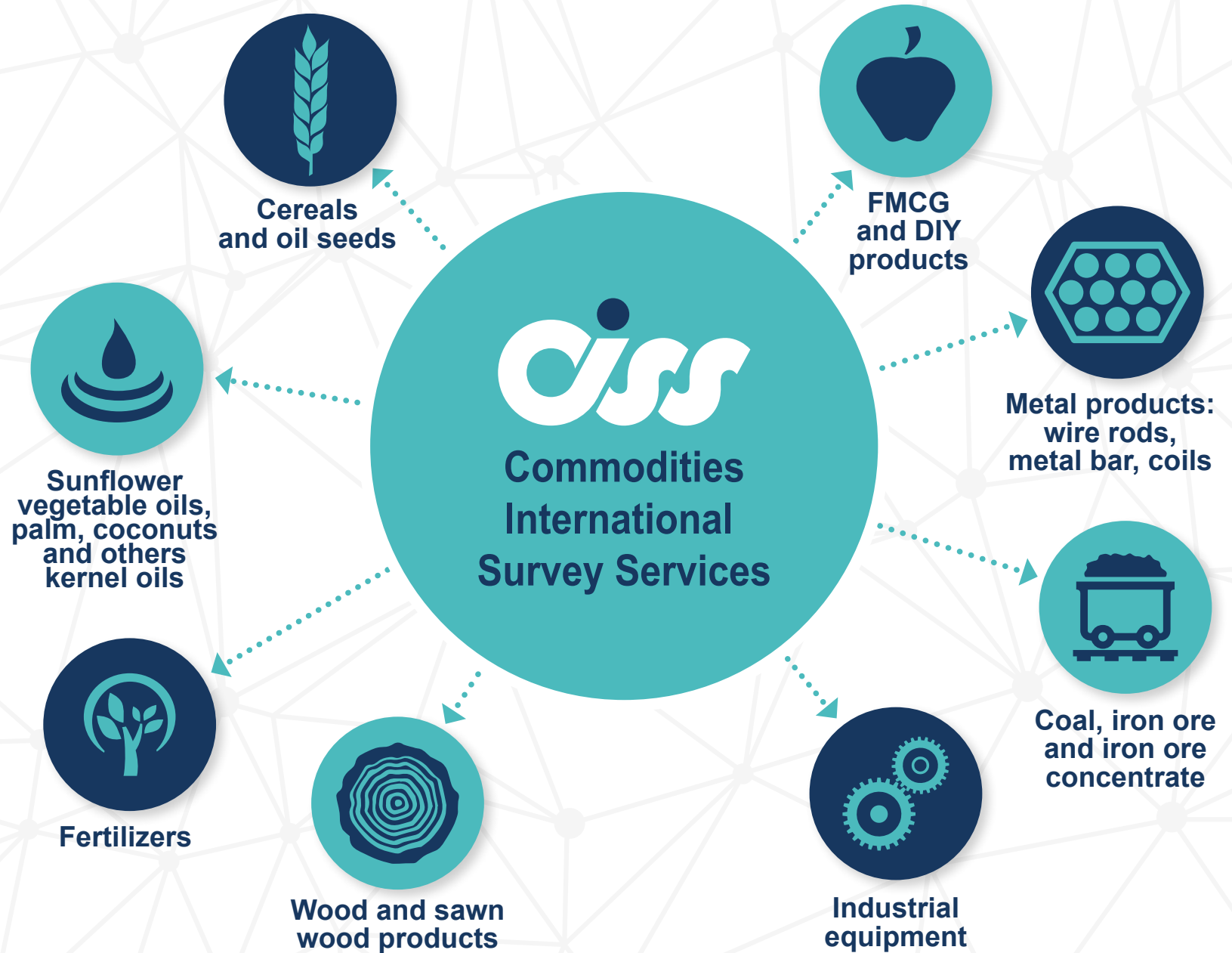
- draught survey (cargo volume determination on the vessel)
- loading supervision of containers including of liquid cargoes in flexi tanks
- sealing of vessel's holds /container's doors
- photo report of all inspection stages

ADDITIONAL SERVICES



- **Cereals cargo fumigation.**
- **SMA** (stock monitoring agreement) - confirmation of cargo availability and quantity / quality stored.
- **Crop monitoring** - forecasting of the future harvest.
- **Checking out of the technical condition** of warehouses, silo bins, terminals.
- **Vendor verification** – checking out of exporter physical existence, their factory accreditations and labor forces, technical capacities.
- **FOG** (Full Outturn Guarantee) – control of quantity of cargo during loading and the guarantee that it will be discharged in the same quantity. In case of shortage during discharge occur, insurance coverage will be applied, which provided by first-class international underwriters and reinsurance companies such as: Allianz, Havrico, AON, Munich Re, Lloyd's and others.
- **FCR** (forwarder certificate of receipt) confirmation for cargo availability and amount accumulated in warehouses.
- **Escorting of the cargo** by the inspector from the place of origin (factory, plant, warehouse) to destination or shipment place (warehouse, port).
- **Temperature and moisture control** of refrigerated cargo (meat, fish, fruits) during whole COLD supply chain delivery by using temperature sensors.
- **Vehicle location and movement inspection** by GPS sensors for transport facilities.
- **Checking out of cargo securing** on the vessel or into container.
- **Consulting assistance not in cargo survey only.** We provide advising for appropriate place of storage, transshipment or terminal facility and cranes capacity. We will help you in forwarding and ocean freight.

TYPES OF CARGOES FOR INSPECTIONS



ADVANTAGES



Respectability towards the Client. Deep understanding and perception of customer's business



Quick decision making and prompt quotations



Integration with high-tech IT solutions



First-class international accreditations



ciSS
Commodities
International
Survey Services



Special discount program for complex of services (incoming control, vessel inspection, fumigation)
Flexibility in rates formations



World-wide partners presents



Absence of corruption



Accuracy, responsibility, reliability

ACCREDITATIONS



OUR PARTHNSERS



CONTACTS



**Commodities
International
Survey Services**



**10 Anson Road #29-05a
International Plaza
Singapore (079903)
Reg.No 201618838r**



Department
of contracts execution:
inspection@ciss-group.com

General questions:
office@ciss-group.com



+(65) 9391-9397
Singapore, Head office

+380 67 6300181
+380 50 3277575
Black Sea Region

+31 6 826 86968
Rotterdam

www.ciss-group.com

It's Shipping & Survey